



# MONTHLY MEMBERSHIP PROGRESS REPORT

District 318 D

Results as of: 05/31/2019

GMT: N S SANKAR

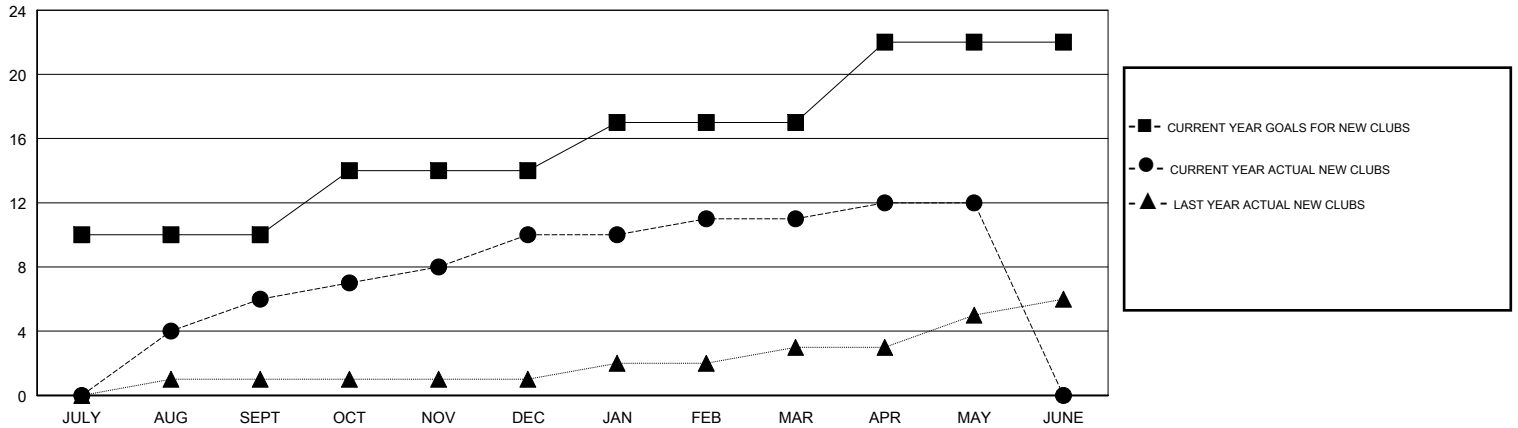
LOCATION INDIA

GMT CA

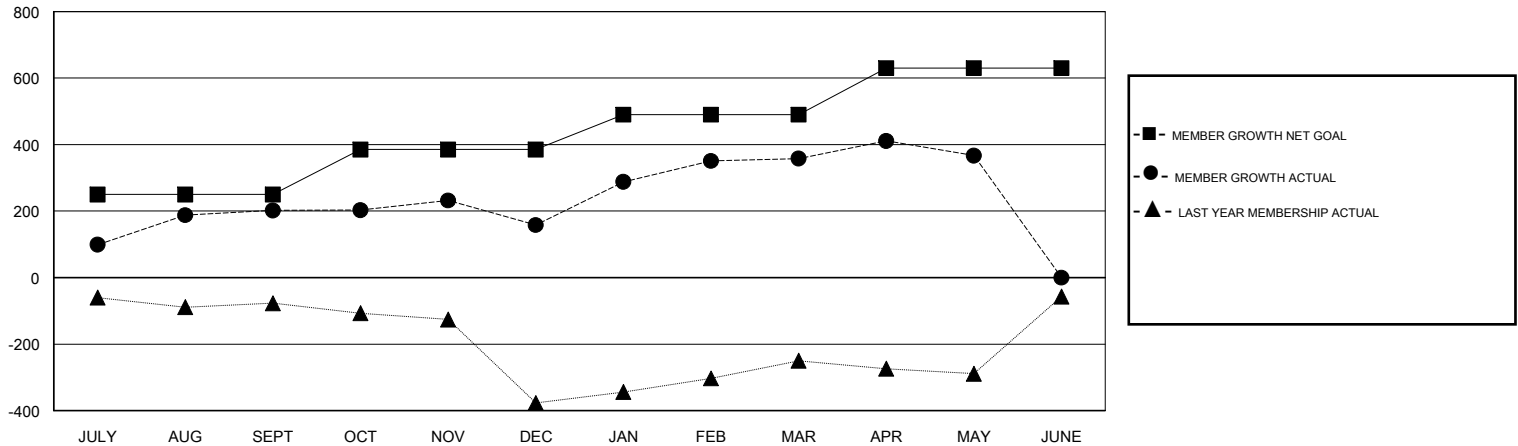
Clubs			
RESULTS FOR 2018-2019			
QUARTER	NEW CLUB GOAL	NEW CLUBS	DROPPED CLUBS
JULY/AUG/SEPT	10	6	0
OCT/NOV/DEC	4	4	4
JAN/FEB/MAR	3	1	0
APR/MAY/JUNE	5	1	0

Members			
RESULTS FOR 2018-2019			
QUARTER	MEMBER GROWTH NET GOAL	MEMBER GROWTH ACTUAL	DROPPED MEMBERS ACTUAL (including transfers)
JULY/AUG/SEPT	250	335	130
OCT/NOV/DEC	135	283	315
JAN/FEB/MAR	105	248	33
APR/MAY/JUNE	140	78	68

GOALS AND ACTUAL NEW CLUBS CUMULATIVE



GOALS AND ACTUAL MEMBERS CUMULATIVE



DROPPED CLUBS: 4	105 CLUBS OF 157 ADDED 1 OR MORE NEW MEMBERS	<u>GENDER DISTRIBUTION</u> MALE 4,855 (81.50%) FEMALE 1,102 (18.50%) Women Percentage Fiscal Year Goal: 12%
<u>DROPPED MEMBERS</u> DECEASED 15 CLUB CANCELLED 78 OTHER 453 TOTAL 546	<a href="#">CLICK HERE FOR CUMULATIVE MEMBERSHIP DATA</a>	TOTAL FAMILY UNIT MEMBERS 1,714 FAMILY MEMBERS PAYING HALF DUES 908